



## **Professional Learning Plan 2022-2023**

# Beacon's Professional Learning Goals 2022-2023

## Excellence

Foundation Reintroduction  
Workshop Model Instruction  
Guided Reading  
Science 21/Mystery Science  
NYS Next Gen Science  
Standards  
Curriculum Mapping  
i-Ready

## Equity

NYS Culturally Responsive  
Sustaining Framework  
  
SEL  
  
DCBOCES Center for Equity

## Sustainability

EFS Assessment  
  
Response to Intervention  
Reframing

# Wilson's Foundation Pre-K-2

- Teachers in K-2 attended the 5 hour Overview by September
- New hires trained in September
- Support throughout the year ASI (Saggie Rudecindo-O'Neill)
- Administrators will be trained in the program to ensure fidelity and accountability



# Workshop Model/Guided Reading

Quarterly Targeted meetings to support balanced literacy

Interactive Read Aloud  
Independent Reading  
Guided Reading (Small Groups)  
Foundations K-2

## Transition to Workshop Model in Math

Main Lesson  
Independent Task  
Small Groups



# i-Ready Phase II Implementation Teacher Toolbox

**2021-2022**

Administering Assessment,  
Getting Good Data, How to use data

**2022-2023**

Full fidelity of use  
Data driven instruction  
Implementation of Teacher Toolbox  
Use of i-Ready in small groups



# Science/ NYS Next Generation Standards

Professional Learning Sessions on Next Generation Science Standards

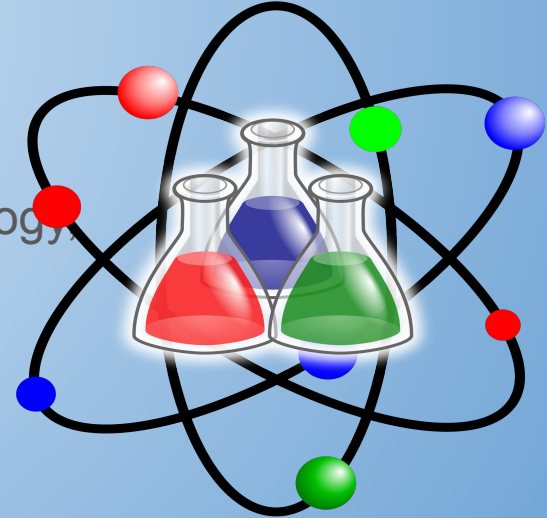
Introduction to Science Inquiry Curriculum

Science 21 Grades 4-5 ( 3 year transition to K)

Mystery Science K-3

Curriculum Mapping in grades 6-12

Possible involvement in Creation of 1500 hours labs in Biology,  
Physics and Chemistry





# Curriculum Mapping

## 2021-2022

Creating Essential Questions, Enduring Understandings  
and Transfer Goals  
Identifying Assessment and Desired Learning Outcomes  
Mapping the Learning Sequence  
Peer Collaborative Review and Reflection

## 2022-2023

Implementation & Revision  
Rubrics  
Project Based Learning  
Equitable Assessment & Scoring



# Social Emotional Learning (SEL)

Responsive Classroom

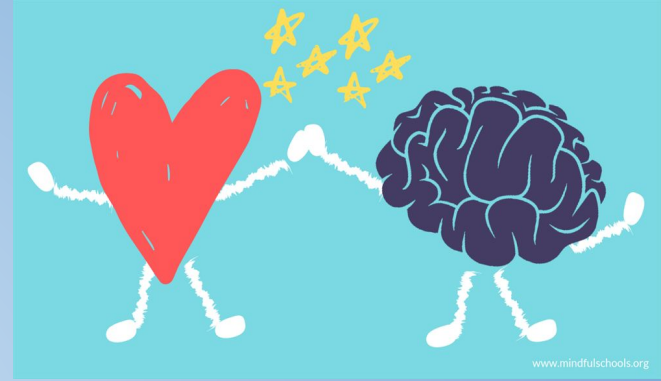
Zones of Regulation

Social Worker Secondary Support

Center for Remediation Restorative Practices Secondary

Dedication of PLD days to 90 minute session of SEL

Discussion of creation of Peer Group within the HS





# Diversity, Equity and Inclusion (DEI)



Unpacking of Culturally Responsive Sustaining Education Framework (CRS-E)

Dedication of PLD days to 90 minute session to DEI topics

Ex. November Intro-CRSE, March ENL Supports

Introducing Critical Problem Based Learning (BOCES Center for Equity)

Introduction of Equity Focus Walks

# Response to Intervention (RTI)/Multi-Tiered Support System(MTSS)

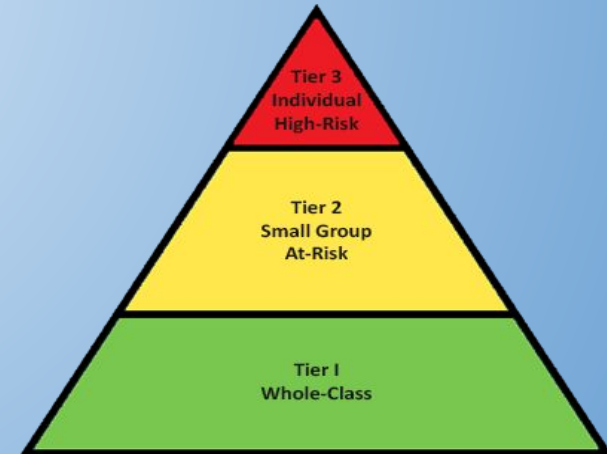
Restructuring protocols to RTI process

Creation of data bank of resources and understanding of implementation

Restructuring referral process and data accountability

Reframing and defining Tier supports

Professional learning of the new process and procedures



# Budgetary Implications

.2 Position plus 11 days of support

Purchasing of Foundations Consumables

Science Hands-On Kits + PD

i-Ready addition to Teacher Toolbox Resource

Substitutes for coverages

Per-Session hours for curriculum mapping and design, Math Committee

PD for building level administrators

Most services and PD through BOCES therefore it is aidable



